

Ayers Supply, Inc.

EVERLASTTM

QUALITY NATURAL STONE





Ayers Supply, Inc. has been producing quality products for landscape in the building stone industry for over 30 years. We are a natural wholesale stone supplier offering a wide variety of stone with range in color, size, shape and thickness which is acquired locally, nationally and internationally. Ayers Supply, Inc. stocks a large inventory and has direct relations to the quarries, allowing for superior quality in product and quick delivery to suit your needs.

Every employee at Ayers Supply, Inc. is committed to serving your needs in the natural stone industry; however, to provide a truly excellent customer service experience we would like you to know that you may contact a customer service representative dedicated to your area.



Nanette Ayers, President

MISSION STATEMENT

Ayers Supply Inc. is a leader in the sales and marketing of Natural Stone products. Our mission is to continually improve as well as diversify our products and services to meet our current and future customer's needs. This will allow us to increase our sales and prosper. In return this will provide a reasonable return for the people who work so hard to achieve our mission.

Values: The fundamentals of our success.

People: Our people are the foundation of our strength. Their involvement and teamwork determine our success by providing us with their intelligence, experience and mutual respect for each other's strengths and weaknesses.

Products: Our products are the result of our combined efforts and a direct reflection of our company. Quality must never be compromised.

Customers: Our customers are the inspiration. We must base our decisions upon their satisfaction. We must continue to achieve that satisfaction through our products and services. We must strive to provide these products and services in a way that is superior to our competitors.

Improvement: Improvement is essential to our success. We must strive to continually improve every aspect of our business and to remain open minded to the changes in our society that demand our attention.

Profits: Profits are essential to survive and grow. We must not forget profits are the ultimate measurement of our success.

Integrity: The conduct of our company must always be preserved in a manner that is both socially and environmentally responsible for its actions. We must be viewed as a company that is respected for accomplishments while preserving integrity.

CONTACT US

2036 Newton Ransom Blvd.
Clarks Summit, PA 18411

www.ayerssupply.com
info@ayerssupply.com

Tel.: 570-587-1318
Fax: 570-587-4960



Products



Facebook



LinkedIn

TABLE OF CONTENTS



Preface.....	
Wallstone	2
Gardenpath / Stepping Stones	6
Standing Irregulars.....	9
Watergarden	12
Veneer / Building Stone	17
Patio Stone and Pavers.....	20
Outdoor Living Accessories.....	24
Specialties.....	26
Belgium Block	27
Marble / Travertine.....	28
Ledgewall	32
Columns and Caps	34
Treads / Steps / Slabs / Risers	35
Outcroppings / Erosion Control.....	38
Accent Boulders	40
Bagged Gravel.....	43
Polymeric Products	48
Sales Representative Directory	49

All stone products have natural variations in size and color. The images depicted in this catalog are average size and color. Actual product purchased may vary in size and color. All packaging information is based on average per unit of measure sold. Ayers Supply, Inc is not responsible for any differences in size, color and/or packaging information.

Ayers Supply, Inc. is strictly a supply company and is not responsible for any issues during or after installation of any of its products sold.

Reproduction of this brochure in whole or in part is prohibited without written authorization by Ayers Supply, Inc.

EVERLAST QUALITY NATURAL STONE™ is a registered trademark of Ayers Supply Inc. Use of this trademark is prohibited by law.



WALL STONE

INTRODUCTION

Wallstone is generally 1-8" thick, 5-16" wide (also known as the face), irregular in shape, and semi-smooth on the top and bottom. This material is available in thin (1-3"), regular (2-4"), (4-6"), and heavy (6-8"). This makes for easier stacking. Wallstone is primarily used to build walls.



Full Pallets

Full Pallets of wallstone are approximately 28 to 30 cubic feet, with a weight of approximately 2800-3200 pounds.

Half Pallets

Half Pallets of wallstone are approximately 14 to 15 cubic feet, with a weight of approximately 1500 pounds.



Retail Pallets

Retail Packs of wallstone are approximately 3 cubic feet, with a weight of approximately 500 pounds. Pallets are packaged with 4 retail packs per pallet.

Available colors:

- Black Regency
- Carolina Rose
- Catawba Brown
- Chocolate Grey
- Colonial Grey
- Colonial Lilac
- Dove Grey
- Emerald Grey
- Laurel Mountain
- Mountain Mist
- Mojave
- Natural Fieldstone
- Swiss Sparkle
- Tumbled Bluestone



WALL STONE



WALL STONE

Colonial



Grey 1" - 3"



Grey 2" - 4"



Grey 4" - 6"



Lilac 1" - 3"



Lilac 2" - 4"



Lilac 4" - 6"

Fieldstone



Natural 1" - 3"



Natural 2" - 5"



Natural 4" - 6"



Red 1" - 3"



Red 2" - 5"



Red 4" - 6"

WALL STONE



Indian Sunset Blend 1" - 4"



Laurel Mountain Tumbled



Laurel Mountain 2" - 4"



Laurel Mountain 4" - 6"



Maple Creek 1" - 3"



Maple Creek 2" - 5"



Maple Creek 4" - 6"



Patina 2" - 4"



Patina 4" - 6"



Pocono Blend 2" - 4"



St. Regis 2" - 4"



Tumbled Bluestone 1" - 3"

WALL STONE



WALL STONE

Snapped/Cut Drywall



Laurel Mountain Guillotine 2" - 4"



Laurel Mountain Guillotine 3" - 8"



Indiana Limestone Snapped
3"x8"x Random



Indiana Limestone
6"x8"x Random



Indiana Limestone Tumbled Edging
6"x5"x Random



Rustic Buff Cut Drywall
5"x8"x Random





GARDEN PATH / STEPPING STONES

INTRODUCTION

Natural Garden Path can be used in various applications such as wall caps, walkways, and walls. The material can vary in consistency with many different sizes and color options.



Garden Path

Garden Path has an approximate face range of 18" - 24" by 1 1/2" - 5" thick. This material contains about 10 - 30 pieces per pallet, depending on thickness of the material. Pallets are approximately 3,000 pounds each.

Available Colors:

- Colonial Grey
- Dusty Rose
- Laurel Mountain
- Maple Creek
- Sandy Taupe
- St. Regis
- Tumbled Bluestone

Regular Fieldstone Garden Path

Regular Fieldstone Garden Path has a face range of 18" - 24" by 1" - 4" thick. Regular Fieldstone Garden Path contains about 25 - 30 pieces per pallet. Pallets are approximately 3,000 pounds each.



Large Fieldstone Garden Path

Large Fieldstone Garden Path has a face range of 24" - 36" by 2" - 5" thick. Large Fieldstone Garden Path is also available in pallet size as well as side by side. Pallets are approximately 3,000 pounds each.

Heavy Fieldstone Garden Path

Heavy Fieldstone Garden Path has a face range of 18" - 24" by 4" - 6" thick. Heavy Fieldstone Garden Path is also available in 2' x 3' pcs. Pallets are approximately 3,000 pounds each. *Available in Laurel Mountain



Southern Stone Garden Path

Southern Stone Garden Path has a face range of 12" - 36" by 1" - 3" thick. Southern Stone Garden Path contains about 15 - 30 pieces per pallet. Pallets are approximately 2,000 pounds each.

Available colors:

- Autumn Brown
- Black Regency
- Carolina Rose
- Catawba Brown
- Chocolate Grey
- Dove Grey
- Emerald Grey
- Mojave
- Mountain Mist
- Swiss Sparkle

Stepping Stones

Stepping Stones are great for walkways, pathways, and gardens. Available types:

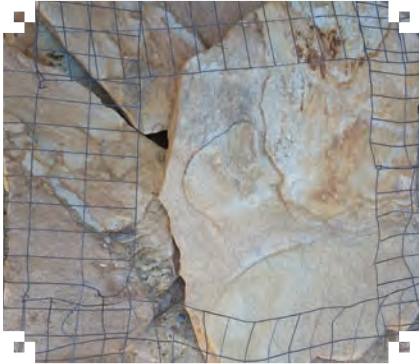
- Basalt Hammered
- Basalt Sawn
- Granite
- Handworked Slate / Quartzite
- Indian Sandstone
- Manufactured Bluestone



GARDEN PATH / STEPPING STONES



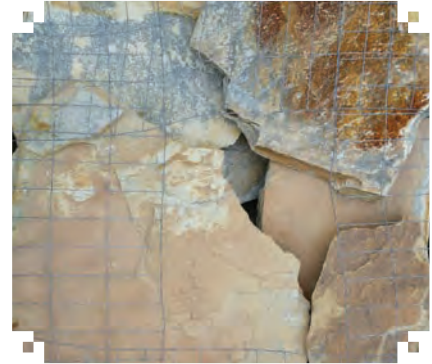
GARDEN PATH/STEPPING STONES



Autumn Brown



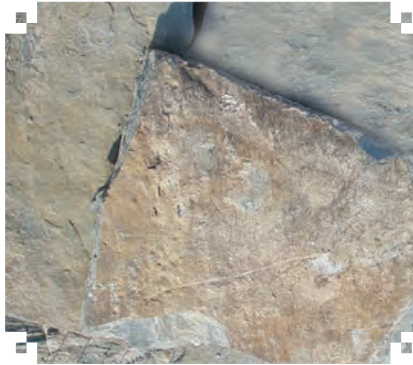
Black Regency



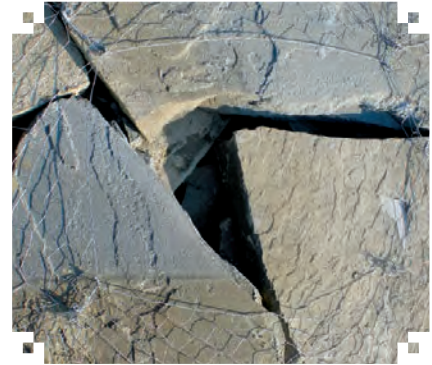
Carolina Rose



Catawba Brown



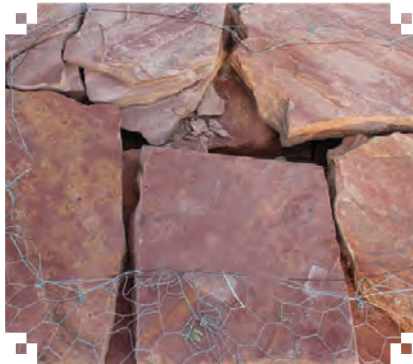
Chocolate Grey



Colonial Grey



Dove Grey



Dusty Rose



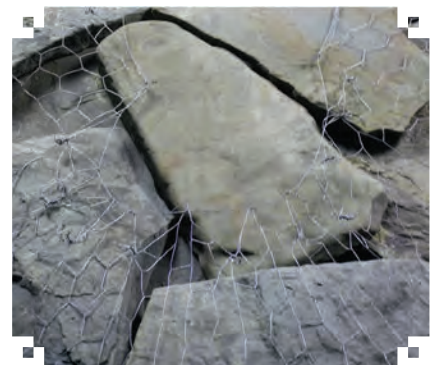
Emerald Grey



Fieldstone



Laurel Mountain



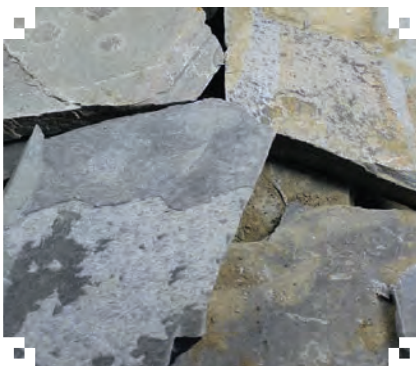
Maple Creek



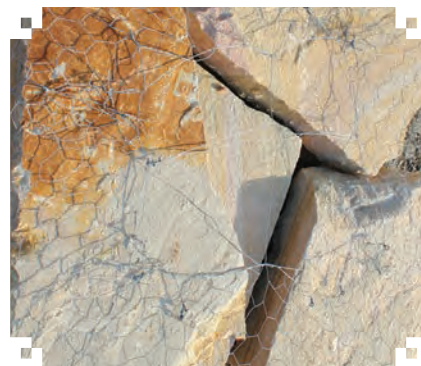
GARDEN PATH / STEPPING STONES



Mojave



Mountain Mist



St. Regis



Sandy Taupe



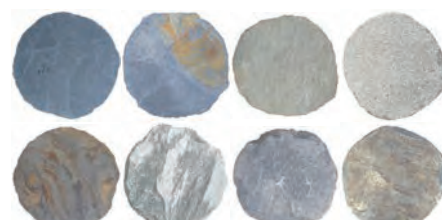
Tumbled Bluestone



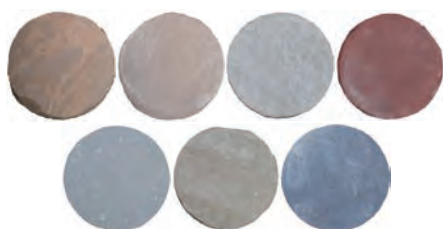
Basalt Stepping Stones



Granite Stepping Stones



Handworked Stepping Stones



Indian Sandstone Stepping Stones



STANDING IRREGULARS

INTRODUCTION



*Standing Irregulars are used in many applications, such as patios and walkways.
Standing Irregulars vary in thickness, color, and overall size, having different face ranges.*

Full Pallets

*Standing Irregulars are available in 1" - 3" thickness,
with a face range of 2' - 4', and have a coverage
area of about 75 - 125 square feet per ton.
Coverage will vary depending on the material used,
the thickness of the material, and the installer.
Pallets weigh approximately 4,000 pounds.*



Retail Pallets

*Standing Irregular retail pallets have a coverage area of about 50 - 75 square feet.
Coverage will vary depending on the material used, the thickness of the material,
and the installer. Pallets weigh approximately 1,500 pounds.*

Available colors:

- Autumn Brown
- Black Regency
- Carolina Rose
- Chocolate Grey
- Dove Grey
- Emerald Grey
- Mojave
- Mountain Mist
- Mountain Range
- PA Flagstone
- Swiss Sparkle



STANDING IRREGULARS



Dusty Rose 1 1/4" - 2 1/4"



Laurel Mountain 1 1/4" - 2 1/4"



Mountain Range 1" - 3"



PA Flagstone Full Color 3/4" - 1 1/4"
 PA Flagstone Full Color 1 1/4" - 2 1/4"



PA Flagstone Lilac 3/4" - 1 1/4"
 PA Flagstone Lilac 1 1/4" - 2 1/4"



Sandy Taupe 1 1/4" - 2 1/4"



Autumn Brown 1" - 3"



Black Regency 1" - 3"



Swiss Sparkle 1" - 3"

STANDING IRREGULARS



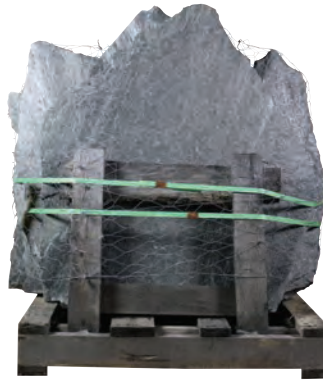
STANDING IRREGULARS



Carolina Rose 1" - 3"



Chocolate Grey 1" - 3"



Dove Grey 1" - 3"



Emerald Grey 1" - 3"



Mojave 1" - 3"



Mountain Mist 1" - 3"



Mountain Range 1" - 3"



PA Full Color 1" - 3"



Laurel Mountain Thermal 1 1/2"





WATERGARDEN

INTRODUCTION

Watergarden products are specialized for use primarily in the installation of water features. These products are low stress for the natural environment.



Watergarden Coping

Watergarden Coping has a face range of approximately 12" - 14", with a thickness of 1/2" - 1". Crates weigh approximately 1,500 pounds.

Great Lake Flats

Great Lake Flats have a face range of approximately 4" - 6", with a thickness of approximately 1". Cylinders weigh approximately 2,500 pounds.



Rustic River Skippers

Rustic River Skippers have a diameter of approximately 4" - 7". Cylinders weigh approximately 2,000 pounds.

Mexican Beach - Flats

Mexican Beach Flats have a diameter of approximately 3" - 8". Cylinders weigh approximately 2,500 pounds.

**Also available in 5" - 8" Super Sacks*



WATERGARDEN

INTRODUCTION



Contractor Sack Mexican Beach

Mexican Beach is available in a variety of colors and sizes.
Sacks weigh approximately 1,800 pounds.

- Black - 1/2" - 1", 1" - 2", 2" - 3", 3" - 5"
- Blended - 1/2" - 1", 1" - 2", 2" - 3", 3" - 5"
- Red - 1" - 2"
- Buff - 1/2" - 1", 1" - 2", 2" - 3", 3" - 5"

Mexican Beach - Retail Packs

Mexican Beach retail pallets are available in select colors and sizes.

Packs weigh approximately 325-375 pounds.

- Black - 1/2" - 1", 1" - 2", 2" - 3", 3" - 5", Flats 3" - 8"
- Blended - 1/2" - 1", 1" - 2", 2" - 3", 3" - 5"
- Red - 1" - 2"
- Buff - 1/2" - 1", 1" - 2", 2" - 3", 3" - 5"



Kewanee - Full Pallets

Kewanees are available in Cobbles, Flats, Rounds, and Skippers.
Kewanees are packaged in 2,500 pound cylinders.

- Cobbles - face range: 6" - 12" thickness: 4" - 6"
- Flats - face range: 6" - 12" thickness: 4" - 6"
- Rounds - face range: 3" - 6" thickness: 3" - 6"
- Skippers - face range: 4" - 7" thickness: 1" - 3"

Kewanee - Retail Packs

Kewanees are available in Flats, Rounds, and Skippers.

Kewanees are packaged in 325-375 pound packs.

- Flats - face range: 6" - 12" thickness: 4" - 6"
- Rounds - face range: 3" - 6" thickness: 3" - 6"
- Skippers - face range: 4" - 7" thickness: 1" - 3"



PA River - Retail Packs

PA River is available in 2-5" retail packs.

Packaged approximately 325 - 375 pounds.

WATERGARDEN



Watergarden Coping



Great Lake Flats



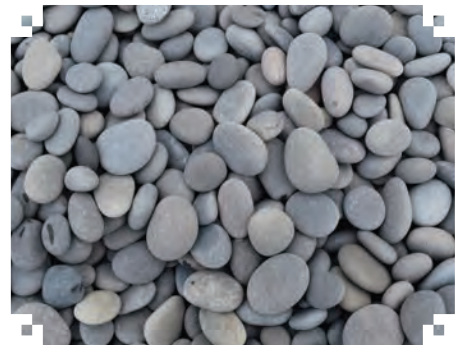
Rustic River Skippers 4" - 7"



Mexican Beach Flats



Mexican Beach Black 1/2" - 1"



Mexican Beach Black 1" - 2"



Mexican Beach Black 2" - 3"



Mexican Beach Black 3" - 5"

WATERGARDEN



WATERGARDEN



Mexican Beach Blended 1/2" - 1"



Mexican Beach Blended 1" - 2"



Mexican Beach Blended 2" - 3"



Mexican Beach Blended 3" - 5"



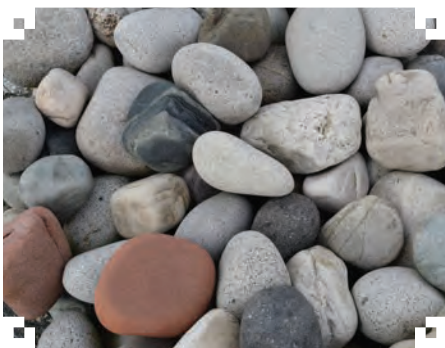
Mexican Beach Buff 1" - 2"



Mexican Beach Buff 2" - 3"



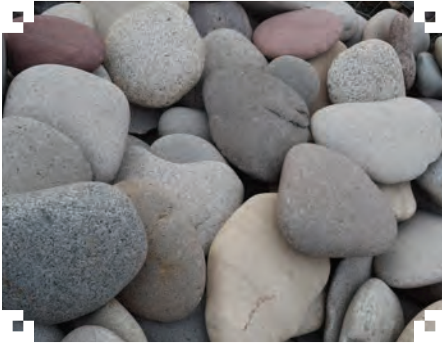
Mexican Beach Red



Kewanee Cobbles



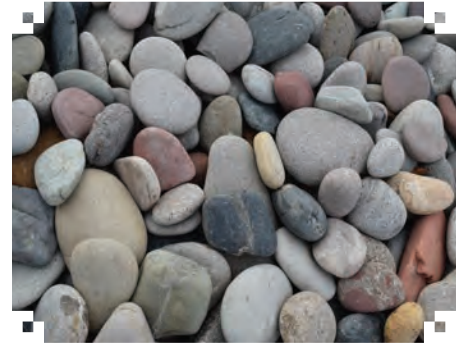
WATERGARDEN



Kewanee Flats



Kewanee Rounds



Kewanee Skippers



veneer/ building stone

introduction



Veneer and building stone are part of the Southern Stone Line.
This material is available in many different colors and applications.
Blends are available by special request. This material can be used in a variety of applications.



Veneer

Veneer ranges in thickness from 3/4" to 1 1/2" thick, with a face range varying 4-20". Average coverage is between 80 - 120 square feet, depending on installation technique and installer. Cylinders weigh approximately 2,000 pounds.

SQ/Rec Veneer

SQ/Rec Veneer produces a semi rectangular stone in a veneer thickness. Pallets are packaged 25 square feet per pack, 4 packs per pallet. 1 ton pallets available upon request.



Building Stone

Building stone ranges in thickness 3 to 6" thick, with a face range varying from 4-20". Average coverage is between 30 - 40 square feet, depending on installation technique and installer. Cylinders weigh approximately 2,000 pounds.

Snapped Building Stone

Snapped Building Stone produces a semi rectangular stone. Face range and thickness may vary. Typical thickness is 3" - 6" with a face range varying from 4" - 20". Average coverage is between 30 - 40 square feet, depending on installation technique and installer. Pallets weigh approximately 2,000 lbs.



Newberry Ledgestone

Newberry Ledgestone is part of our veneer Designer Series collection. It is available in flats and corners. Each box of flats contains 5 square feet and will have a rise of 2"-3"-4" per piece. Tolerances (+/-) 1/16". Thickness is 3/4"-1" (+/-). It will not exceed 1 1/4" in thickness. This is to maintain an average weight of less than 15 lbs. per sq ft. Corners are a 2 piece mitered corner. Packaging and stone sizes will be consistent with the flats with the exception to the end of each piece being mitered. Each box of corners will contain 5 sq ft. of stone with mitered ends. This will cover 6 linear ft. of one side of the corner or 3 linear ft. double sided.



Autumn Brown



Carolina Rose



Black Regency



Catawba Brown



Chocolate Grey



Emerald Grey



Dove Grey



Mojave



Mountain Mist



Swiss Sparkle



Thin Veneer Corners



BUILDING STONE



BUILDING STONE



Black Regency



Carolina Rose



Catawba Brown



Chocolate Grey



Dove Grey



Emerald Grey



Mojave



Mountain Mist





PATIO STONE AND PAVERS

INTRODUCTION

Patio Stone is great for indoor/outdoor patios and walkways.

This material is available in a variety of types, sizes, colors, and thickness.

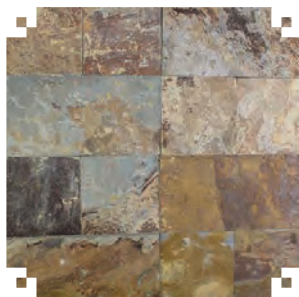
Pavers are great for walkways, patios, and driveways. This material is available in several different types, colors, and sizes.

Imported Slate and Quartzite

This is a full dimensional, ungauged material with an approximate 1" thickness.



Desert Gold Quartz

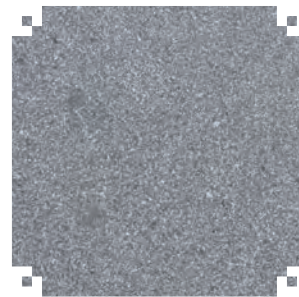


Multicolor Slate

Granite



Cedar Lake Granite



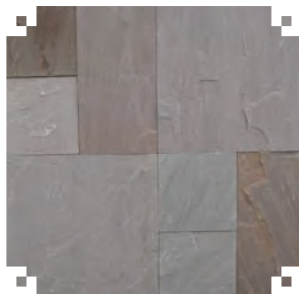
Blue Mist Granite

Indian Sandstone

Indian Sandstone is non dimensional, with a calibrated 1" thickness.



Malibu



Abbey Brook



Blue Ice



Jurassic



Rainbow



Teakwood

PATIO STONE AND PAVERS INTRODUCTION

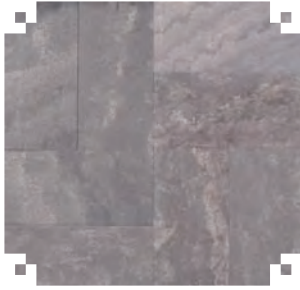


Pacific Bluestone

Pacific Bluestone is dimensional, with a gauged 1 1/4" thickness. This material is available in 12" x 12" up to 24" x 36", in 6" increments, with approximately 190 sq ft per pallet.



Light Blue



Brown Wave



South Pacific

Pennsylvania Bluestone

Pennsylvania Bluestone is non dimensional. Available in thermal gauged, thermal ungauged, and natural cleft. This material is available in 1" or 1 1/2" thickness, with sizes available in 12" x 12" up to 24" x 36", in 6" increments.



Full Color

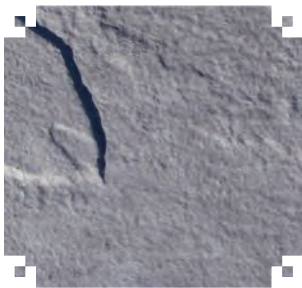


Blue

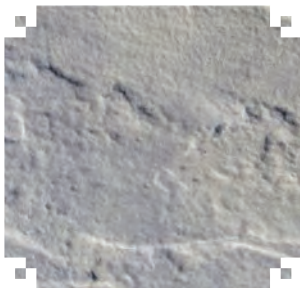


Manufactured Bluestone

Manufactured Bluestone is dimensional, with a 1 1/2" thickness.



True Blue



Blue Variegated



Tan Variegated



PATIO STONE AND PAVERS INTRODUCTION

Random Mesh Back Pavers

Random Mesh Back Pavers are a tumbled, 1" gauged material that is commonly used for patios.



Tumbled Desert Gold



Tumbled Multicolor Slate



Tumbled Bluestone Pavers

Tumbled Bluestone is a non dimensional, gauged, tumbled paver.

Sizes:

- 6" x 6"
- 6" x 12"
- 12" x 12"
- 12" x 18"



PATIO STONE AND PAVERS



PATIO STONE AND PAVERS





OUTDOOR LIVING ACCESSORIES

Canyon Grey Fire Pit Kits 6"x8"



Canyon Grey Benches
Available in 3' and 4' lengths



Indiana Limestone
Rock Faced Bistro Table 42"

Rustic Buff Benches
Available in 3' and 4' lengths



Rustic Buff Fire Pit Kits 5"x8"



OUTDOOR LIVING ACCESSORIES



Manufactured Circular Kit Ashford 16"x31"x47"



Manufactured Ledgestone Fire Pit Kits 14"x33"x47 1/4"



Blue



Blue Variegated



Tan Variegated



Brown

SPECIALTIES



Feather Rock Planters



Black Marbled Carved Fountains



Granite Orbs



Granite Millstones



Granite Curbing



Granite Bridge

BELGIUM BLOCK

INTRODUCTION



Jumbo 10"x4"x7"

- Grey - 100 Pieces Per Pallet
- Pink - 100 Pieces Per Pallet
- Black - 100 Pieces Per Pallet



Regular 5"x5"x9"

- Grey - 140 Pieces Per Pallet
- Pink - 160 Pieces Per Pallet
- Black - 140 Pieces Per Pallet



Cube 4"x4"x8"

- Grey - 225 Pieces Per Pallet
- Pink - 225 Pieces Per Pallet



Mini Cube 4"x4"x4"

- Grey - 550 Pieces Per Pallet
- Pink - 500 Pieces Per Pallet
- Black - 550 Pieces Per Pallet



Landscape Pavers 6"x12"x3"

- Grey - 240 Pieces Per Pallet



MARBLE/TRAVERTINE

INTRODUCTION

Marble and Travertine offers a full line of product for your project, from exterior to interior patios, pool coping, pool decks, steps, veneers, as well as accent pieces. Marble and Travertine provide timeless beauty to any commercial or residential project. Customization and various blends are available upon special request.

Marble / Travertine Patio Pavers

Pavers are available in a wide variety of sizes and are suitable options for decks, patios, walkways, and more. This material is available in 1 1/4". Available in French Pattern Tumbled 8x8 up to 16x24.

Available Travertine Colors:

- Antico Travertine
- Ella Scabos Travertine
- Gold Travertine
- Oxford White Travertine
- Oxford Silver Travertine
- Walnut Travertine

Available Marble Colors:

- Afyon Ice Marble
- Blue Marble
- Winter Crema Marble



Marble / Travertine Coping

Coping is available in a wide variety of sizes. Copings are perfect for pools, stairs, and borders. This material is available in 2" thickness. Please ask about special sizes as most can be accommodated.



Available Travertine Colors:

- Antico Travertine
- Ella Scabos Travertine
- Gold Travertine
- Oxford White Travertine
- Oxford Silver Travertine
- Walnut Travertine

Available Marble Colors:

- Afyon Ice Marble
- Blue Marble
- Winter Crema Marble

Veneer and Ledge Stone

Veneer is a great exterior and interior application.

Veneer is available in 4" x mix sizes (4" x 8", 4" x 12", 4" x 16").

Ledge stone is available in 6" x 24".



MARBLE/TRAVERTINE

INTRODUCTION



Veneer and Ledge Corner

Corners are a great addition to the veneer.

Veneer corners are available in 4" x 6" pieces.

Ledge corners are available in 6" x 6" pieces.

Marble / Travertine Treads and Wallcaps / Column Caps

Treads are available in many different lengths and widths.

Wallcaps and column caps are available in select sizes.

Available Travertine Colors:

- Antico Travertine
- Ella Scabos Travertine
- Gold Travertine
- Oxford White Travertine
- Oxford Silver Travertine
- Walnut Travertine

Available Marble Colors:

- Afyon Ice Marble
- Blue Marble
- Winter Crema Marble



Marble / Travertine Steps

Steps are a great addition to finish any project. Steps are available in select lengths and widths.

Available Travertine Colors:

- Antico Travertine
- Ella Scabos Travertine
- Gold Travertine
- Oxford White Travertine
- Oxford Silver Travertine
- Walnut Travertine

Available Marble Colors:

- Afyon Ice Marble
- Blue Marble
- Winter Crema Marble

MARBLE/TRAVERTINE



Afyon Ice Marble



Afyon Ice Sandblasted



Antico Travertine



Blue Marble



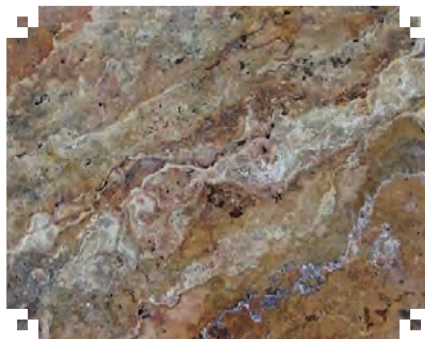
Blue Marble Sandblasted



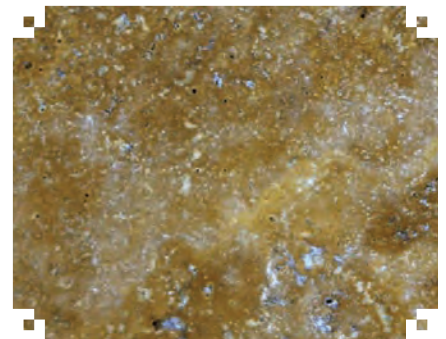
Winter Crema



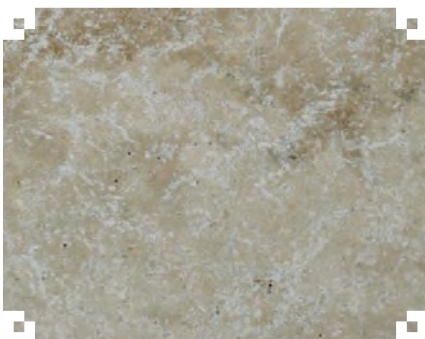
Winter Crema Sandblasted



Ella Scabos



Gold Travertine



Oxford White



Oxford Silver



Walnut Travertine

MARBLE/TRAVERTINE



MARBLE/TRAVERTINE





LEDGEWALL INTRODUCTION

Natural Ledge wall Panels, Column Units, and Caps, are made to be stacked for quick and seamless installation.

Ledge wall Interlocking Panels

Pre-assembled, stacked natural stone pieces create a panel that can be used in a wide range of veneer applications. Interlocking ends make the joints virtually undetectable after installation. Panels are available in rough, mainly used for exterior, or flat, which can be used for exterior as well as interior. Panels are under 15 lbs per sq ft which allows installation without any additional structural modifications and costs.

Available colors:

- Desert Gold
- Multicolor
- Cream White Quartz

Ledge wall Interlocking Corners

Dog ear 90 outside corners are available in all the same colors as the ledge wall panels.

Available colors:

- Desert Gold
- Multicolor
- Cream White Quartz



Multicolor Slate Rough



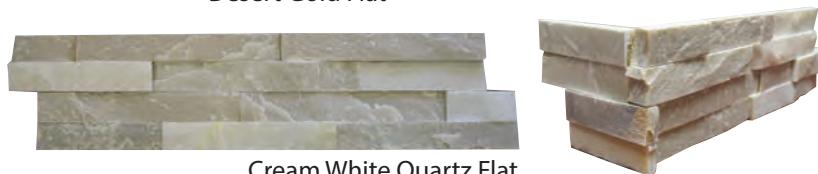
Multicolor Slate Flat



Desert Gold Rough



Desert Gold Flat



Cream White Quartz Flat

LEDGEWALL





COLUMNS AND CAPS

INTRODUCTION



Ledgewall Column Units

Ledgewall Column Units are 18" x 18" x 12" and are designed to be stacked on top of each other for easy assembly. When installed, joints blend in giving a professional masonry look.

Available colors:

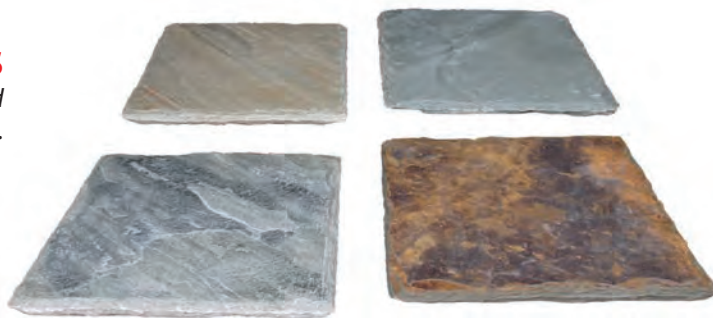
- Desert Gold
- Multicolor
- Evergreen

Ledgewall Column Caps

For a finishing touch on your column units, hand chiseled natural caps in matching colors are available.

Available colors:

- Desert Gold
- Multicolor
- Evergreen
- Asia Blue



Indiana Limestone Caps

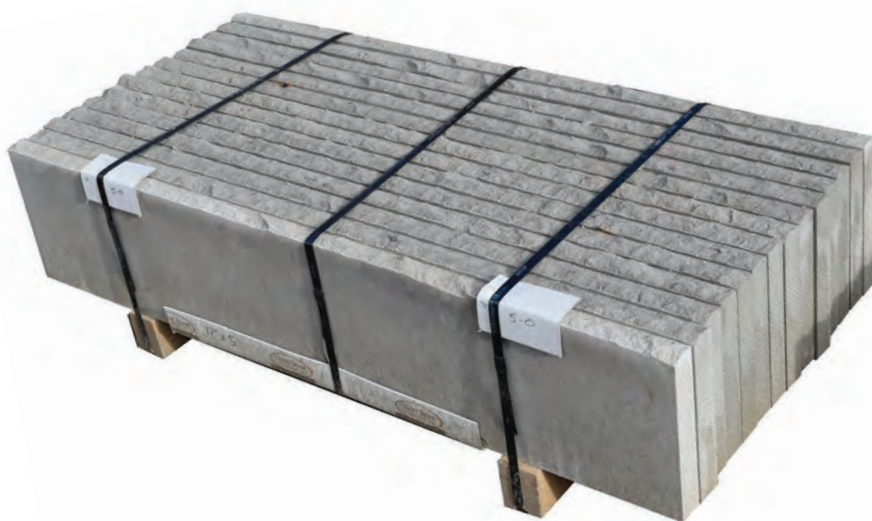
3" thick with snapped faces/edges.

Available in:

- 24"x24"
- 28"x28"
- 30"x30"
- 36"x36"

TREADS / STEPS / SLABS / RISERS

INTRODUCTION



Treads

Treads or hearths are commonly used for mantels, wallcaps, and step risers. Treads are available in many different types of products.

- **Pennsylvania Flagstone Treads / Granite Treads**
This material is thermal on 6 sides with a gauged 2" thickness. Available in 1 1/2".
- **Pacific Blue Treads**
Pacific Treads are thermal on the top and 2 short sides, with 1 rockfaced long side. This material has a 2" thickness. Also available in Pacific Brown Wave.
- **Indian Sandstone Treads**
Indian Sandstone is calibrated with a 2 1/4" thickness with a natural top. This material is rockfaced on 2 short sides and 1 long side. Available colors are Abbey Brook and Malibu.
- **Chocolate Grey Treads**
Chocolate Grey Treads are natural top and bottom, thermal 1 long side and 2 short sides. The thickness ranges from 2" – 2 1/2", and it is available in 4', 5' and 6' lengths.
- **Indiana Limestone Treads**
Indiana Limestone treads are thermal top, rockfaced 1 long side. They are 2" thick and range from 8" - 24" in width with lengths from 4' – 8'. Custom sizes available upon request.
- **South Pacific Treads**
South Pacific treads are thermal top, thermal 1 long side. This material has a 2" thickness.



Indian Sandstone - Abbey Brook Treads



Indian Sandstone - Malibu Treads



Chocolate Grey Treads



Pacific Light Blue Treads



PA Bluestone Treads 2"



Indiana Limestone Treads

*Custom sizing available upon request.



TREADS / STEPS / SLABS / RISERS

INTRODUCTION

Steps

Steps are a precut, uniform stone specifically used for a 6" rise.

- **Pennsylvania Flagstone Steps / Granite Steps**
This material is thermal on 6 sides with a gauged 6" rise.
- **Pacific Blue Steps**
Pacific Blue Steps are thermal on the top and 2 short sides, with 1 rockfaced long side. This material has a 6" rise.
Also, available in Pacific Brown Wave.
- **Laurel Mountain Steps**
Laurel Mountain is available in many different options. All have a 6" rise.
Thermal on 6 sides
Thermal on 3 sides, rockfaced 1 long side
Natural on 6 sides
Natural on 3 sides, rockfaced 1 long side
Guillotined
- **Indiana Limestone Steps**
Indiana Limestone steps have a snapped face with a 6" rise.
- **Canyon Grey Steps**
Canyon Grey snapped steps are 18" wide, 48" long with approx. 6" height. They are also available in Rustic Buff.



Brown Wave Step



Indiana Limestone



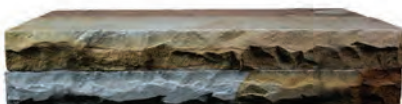
Granite Steps



48" x 18" Snapped Steps Canyon Grey



Laurel Mountain
Sawn / Thermal Step



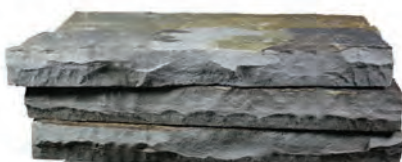
Laurel Mountain
Sawn / Rockfaced Step



Laurel Guillotined



Laurel Mountain
Natural Step Sawn Bottom



Laurel Mountain
Natural Step Rock Faced/Sawn Bottom



Pacific Bluestone



PA Bluestone Steps

TREADS / STEPS / SLABS / RISERS

INTRODUCTION



Slabs

Slabs are commonly used for walkways, oversized retaining walls, natural outcroppings, and natural steps. Slabs are typically 2' - 6' long x 2' - 4' wide x 4" - 6" thick.

Available colors:

- Colonial Grey
- Laurel Mountain
- Pennsylvania Fieldstone
- Rustic Buff
- Canyon Grey



Natural Fieldstone Slabs 4" - 6"



Canyon Gray Slabs 6"



Rustic Buff Slabs 6"



Laurel Mountain Slabs 4" - 6"



Colonial Grey Slabs 4" - 6"



Risers

Risers are commonly used for random steps. Risers have a uniform size and thickness. Risers are typically 2' - 6' long x 2' - 4' wide x 5" - 8" thick.

Available colors:

- Colonial Grey
- Pennsylvania Fieldstone
- Laurel Mountain (available upon request)



Colonial Grey Risers 6" - 8"



Natural Fieldstone Risers 6" - 8"



OUTCROPPINGS / EROSION CONTROL

INTRODUCTION

Outcroppings



Rustic Buff
13-14" Benches-Building
Blocks



Rustic Buff Beige
8 1/2" x 9 1/2" Outcroppings



Canyon Tan
16" Outcroppings



Canyon Grey
9 1/2" Outcroppings



OUTCROPPINGS / EROSION CONTROL

INTRODUCTION



Erosion Control



Rustic Buff
13-14" Chunks



Canyon Tan
25" Chunk



Canyon Grey
25" Chunk





ACCENT BOULDERS

INTRODUCTION

Accent Boulders are available in various shapes, sizes, and colors. They are categorized into three categories: garden rounds, one mans, and landscape boulders.



Garden Rounds

Garden rounds are typically 7-12" in diameter and packaged in wire baskets.



One Man

One mans are typically 12-18" in diameter and packaged in wooden crates.



Landscape Boulders

Landscape boulders are typically 18-24" in diameter, packaged on a pallet, and wired.

Landscape Boulders, upon special request, may be available up to 48" in diameter, depending on product.

ACCENT BOULDERS



ACCENT BOULDERS



Autumn Haze



Autumn Red



Blue Mountain



Delaware River



Feather Rock



Floral Pink



Laurel Mountain



PA River



Sunset Lite



Volcanic Lava



White Marble



Zebra



ACCENT BOULDERS



Canyon Grey



Canyon Tan



Rustic Buff



BAGGED GRAVEL

INTRODUCTION



Gravel is available in bags and 23 ton bulk loads. This material is packaged on site. We offer a wide variety of types, colors, and sizes. This material is great for garden centers and supply yards.



Decorative Gravel

Decorative Gravel is available in various sizes and colors.

Bagged Gravel is packaged in .5 cubic foot bags, with 56 bags per pallet.

Exotic Pebbles

Exotic Pebbles are available in select sizes and colors.

Bagged Gravel is packaged in .25 cubic foot bags, with 100 bags per pallet.

Variety pack available, 100 bags per pallet.



Sunstone

Sunstone is tumbled, recycled glass, perfect for gardens, potted plants, and decorative applications. This material is available in green, brown, and Saratoga.

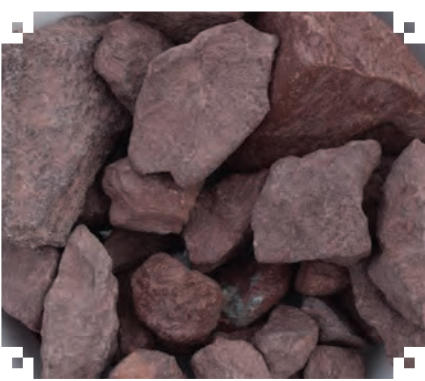


BAGGED GRAVEL

Decorative Gravel



All Purpose Sand



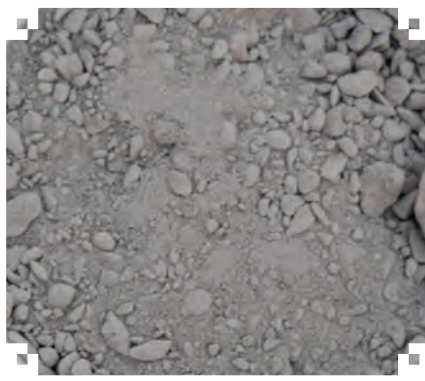
Autumn Red 3/4"



Autumn Red 3/8"



Black FloweRock



Blue Mountain Patio Screening



Brick Nuggets



Blue Mountain 3/4"



Delaware River 3/4"



Delaware River 1" - 3"



Floral Pink 3/4"



Marble Chip 1/2"



Marble Chip 1"

BAGGED GRAVEL



BAGGED GRAVEL



Marble Chip 1 1/4"



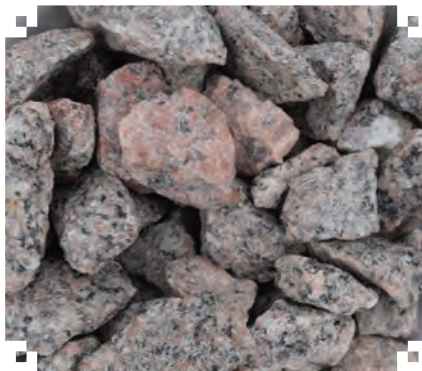
Maryland River Pea Gravel



Maryland River 3/4"



Maryland River 2"



Mystic Rose



Patio Base



Play Sand



Pocono River 3/8"



Pocono River 3/4"



Pocono River 1" - 3"



Red FloweRock



Southern Gold 3/4"

BAGGED GRAVEL



Southern Gold 1/2"



Sunset Lite



Terrapin Green

Exotic Pebbles



Mexican Beach Black 1/2" - 1"



Mexican Beach Black 1" - 2"



Mexican Beach Black 2" - 3"



Mexican Beach Black 3" - 5"



Mexican Beach Blended 1/2" - 1"



Mexican Beach Blended 1" - 2"



Mexican Beach Blended 2" - 3"



Mexican Beach Blended 3" - 5"



Mexican Beach Buff 1" - 2"

BAGGED GRAVEL



BAGGED GRAVEL

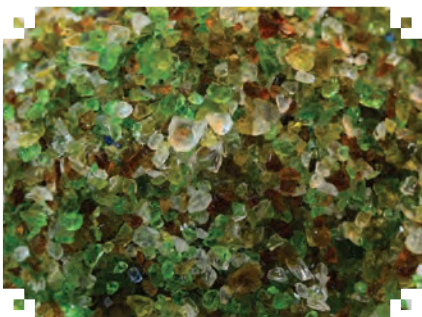


Mexican Beach Buff 2" - 3"



Mexican Beach Red 1" - 2"

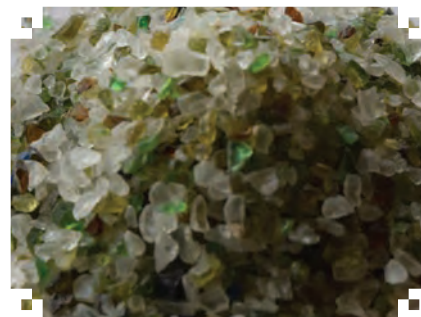
Sunstone



Green Recycled Glass



Brown Recycled Glass



Saratoga Recycled Glass





POLYMERIC PRODUCTS

Polybind offers a revolutionary range of unique, user-friendly wares – the comprehensive Polybind family of products, designed to perfect the finest and most challenging hardscaping task.



Cleaner, Sealer & Adhesive

Cleaner - Polybind Cleaners are available in multiple applications for all of your manufactured and natural stone needs.

Sealer - Polybind Sealers add a unique and elegant look to your natural stone and paver projects, while safe guarding your investment. They are offered in a wide variety of finishes.

Adhesive - Polybind Adhesive is one of the strongest adhesives on the market. It is especially formulated for bonding concrete, natural stones, blocks, bricks, and pavers.

Sand



Polybind Sand is a unique mixture of polymer binders and calibrated sand. This firm bond maintains pavers securely in place, being equally effective on both horizontal and sloped surfaces.



Polybind Complete Sand is specifically designed for drainage and non-drainage base systems. It can be used with concrete pavers, wetcast, and natural stones.

Polybind Dust is a unique mixture of polymer binders and calibrated crushed stone.

This firm bond maintains the stones securely in place, being equally effective on both horizontal and sloped surfaces.



Polybind Rock Bond is a one component polyurethane binder, that mixed with riverstone, creates a durable, porous, and decorative surface.



SALES REPRESENTATIVE DIRECTORY



To serve our customers more efficiently, the following is a list of our sales representatives. If no representative is listed for your area, please feel free to contact our office directly.



ULTIMATE STONE SOLUTIONS

104 Tennyson Lane
North Wales, PA 19454

Jim Vesci, Jr.

Cell: (215) 290-9352
Fax: (215) 646-9028
Email: jvescjr@ultimatestonesolutions.com
Representing: SC, PA, DE, Central & Southern NJ

Jim Vesci, Sr.

Cell: (215) 266-2975
Fax: (215) 628-0793
Fax: (215) 646-9028
Email: jvescjr@verizon.net
Representing: SC, Eastern PA, Central & Southern NJ

Mike Iannelli

Cell: (610) 812-1711
Fax: (215) 646-9028
Email: mike@ultimatestonesolutions.com
Representing: Eastern & Central PA & Southern NJ

Joe Doran Sr.

Cell: (610) 348-0334
Fax: (610) 340-2930
Email: jdoran04@gmail.com
Representing: Central & Southern NJ

Joe Doran Jr.

Cell: (610) 348-0347
Fax: (610) 340-2930
Email: joedoran12@gmail.com
Representing: Central & Southern NJ

Tom Rodriguez

Cell: (412) 445-9289
Email: trod3@earthlink.net
Representing: Western PA



ADLAR INC.

Richard Rzepka, President

3853 Orchard Street
Walworth, NY 14568
Cell: (585) 469-0401
Fax: (315) 538-8085
Email: adlarinc@rochester.rr.com
Representing: Northern & Western NY



GARDEN REP GROUP, LLC

James Curran

15 Main Street
Hyde Park, NY 12538
Cell: (845) 430-5887
Fax: (845) 622-3610
Email: jamescurran@optonline.net
Representing: Eastern NY, Northern & Central NJ, Long Island, NY



THE GROW AGENCY LLC

Pete Sole, Jr.

4352 W 96th Street
Indianapolis, IN 46268
Office: (800) 875-1387
Fax: (317) 573-5779
Email: stone@petesole.com
Representing: IN, IL, KY, OH, TN



K & S ASSOCIATES

Richard Knoener, President

20 Barnard Road
Granville, MA 01034
Office: (413) 357-8706
Cell: (860) 930-4385
Fax: (413) 357-6311
Email: kandsassoc@comcast.net
Web: www.kandsassoc.com
Representing: Western MA, CT

Don Schmidt

PO Box 272
Groton, VT 05046
Office: (802) 584-3254
Email: dschmidt@signalmountainproducts.com
Representing: ME, NH, VT



NEWCO MARKETING

Gary Berlin

11436 Cronridge Drive, Suite I
Owings Mills, MD 21117
Office: (410) 363-3383
Fax: (410) 356-4569
Email: newco@erols.com
Representing: MD, VA, WV



AGRI-MARKETING OF NORTH AMERICA

1481 13th Street NW
Cairo, Georgia 39828
Office: (888) 447-7160

Kevin L. Vance, President

Cell: (239) 229-6433
Email: kevinvance@mcgarrisonllc.com
Representing: FL, GA, AL

Nancy Vance

Cell: (239) 229-6434
Email: nancyvance@mcgarrisonllc.com
Representing: FL, GA, AL

